

Product Description

Kernel Board

ALTERA Cyclone II Development Board

FPGA :EP2C8Q208C8N

SDRAM : 256M BIT /or 32M byte

CFI_FLASH : 64M BIT / or 8M byte

SRAM :256K X 16 /or 4M BIT

EPCS :EPCS16/ or M25P16 (Configure FPGA)

CLK_INPUT:50MHZ,and one user clk input

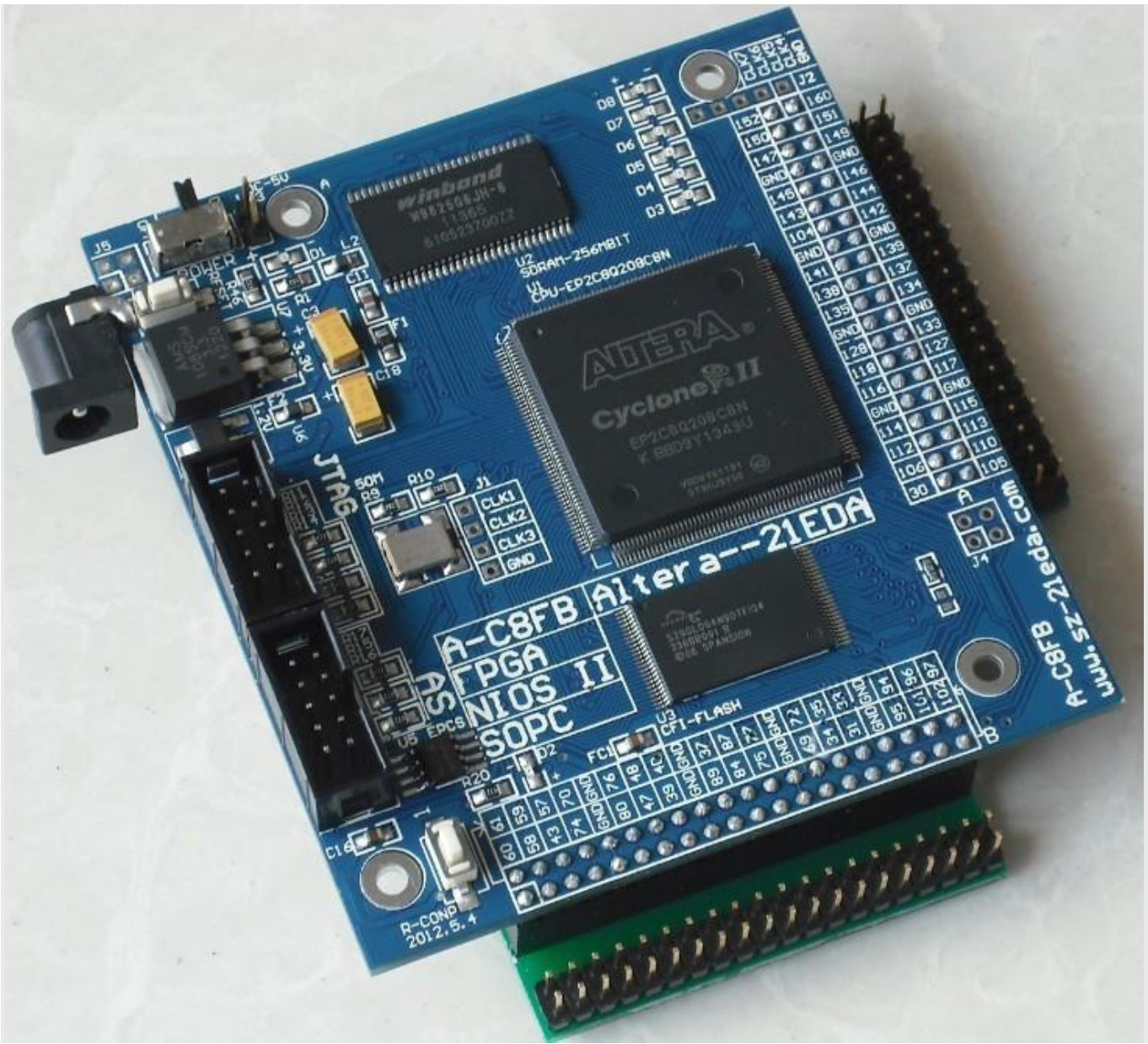
Shipping list:

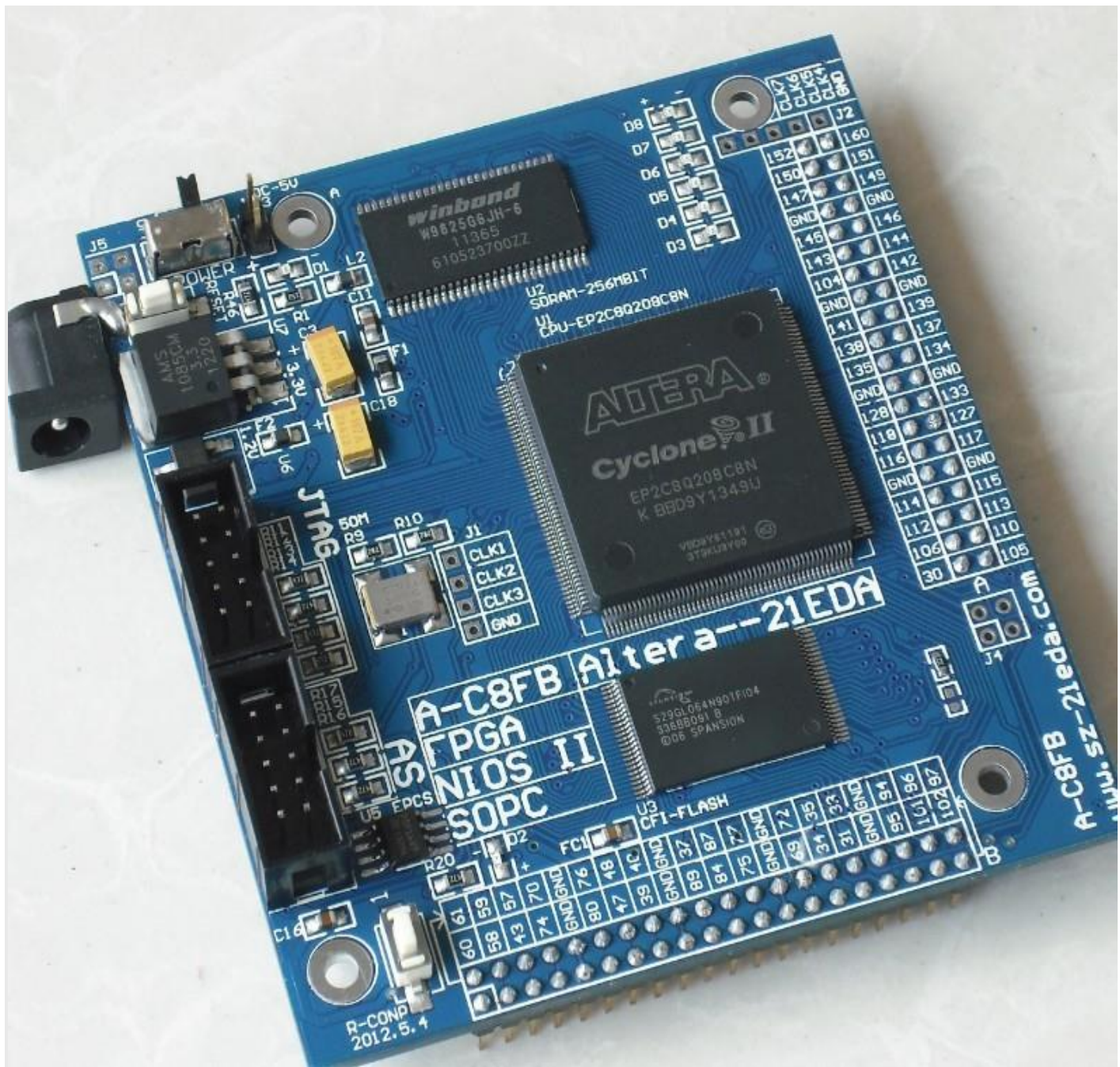
FPGA Board

USB Blaster

USB DC 5V

4 X The pillars





A-C8FB Altera--21EDA

FPGA
NIOS II
SOPC

R-COMP
2012.5.4

www.sz-21eda.com

winbond
W382566JH-6
11365
610523700ZZ

U2
SDRAM-256MBIT
U1
CPU-EP2C8Q208C8N

ALTERA
Cyclone II
EP2C8Q208C8N
K BBD9Y1349U
V102Y51181
879HJBY90

329GL06AN90T1D04
3288B091 B
006 SPANSON

POWER
AMS
1085CM
1.220

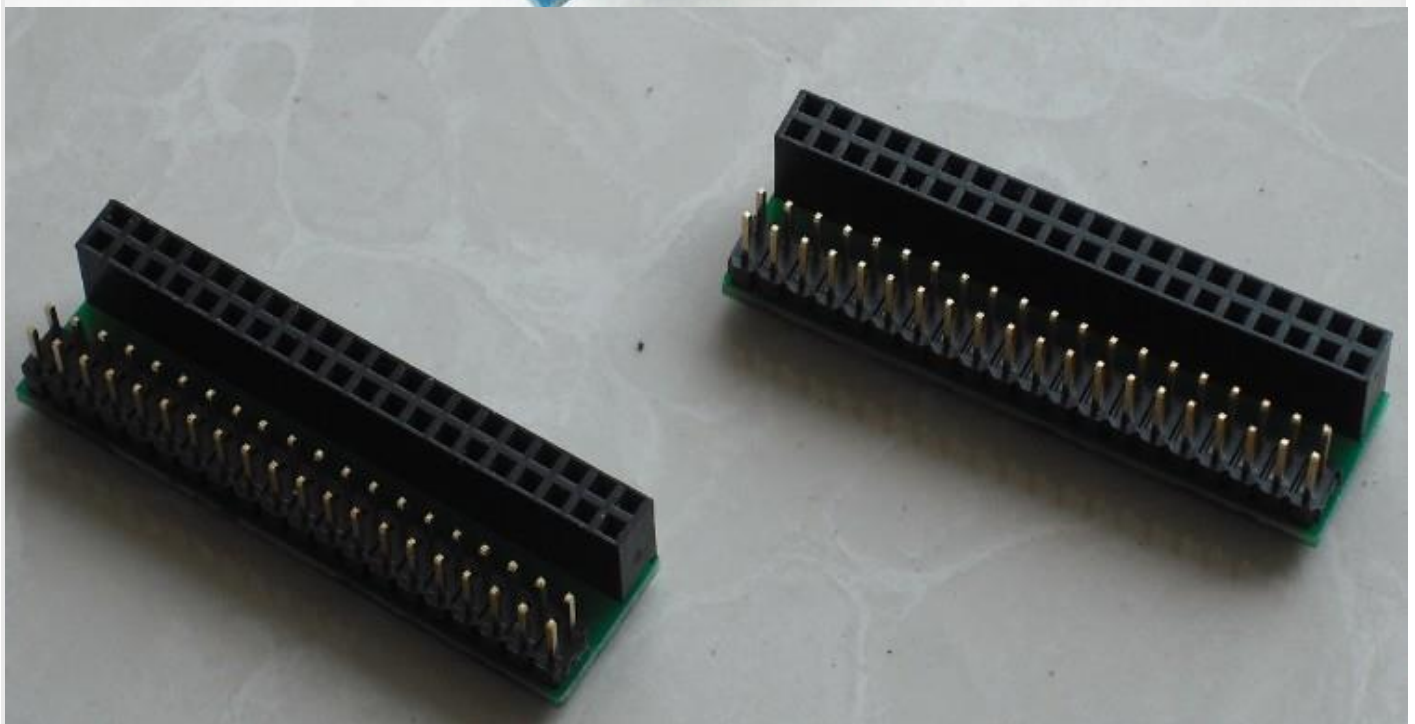
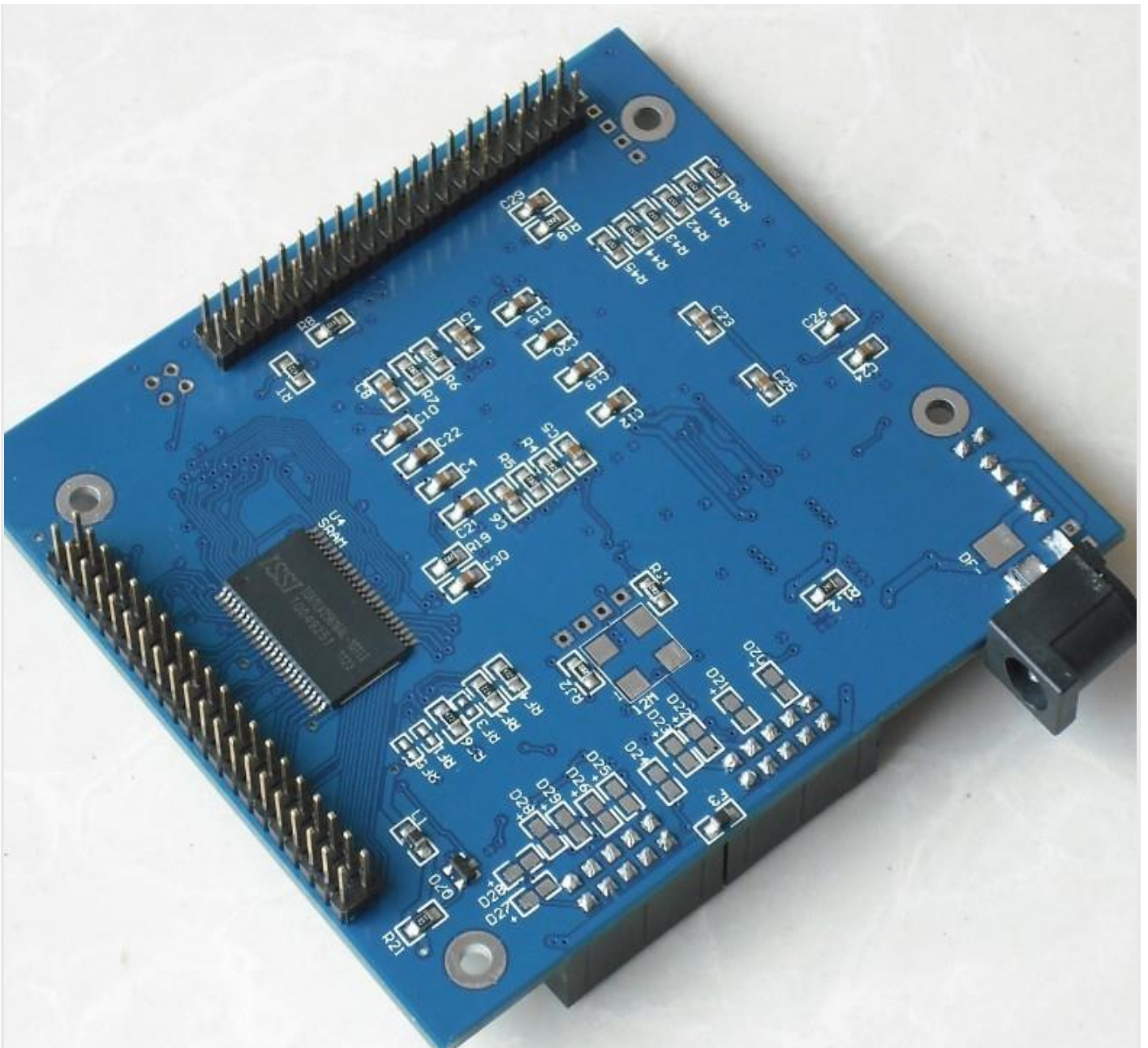
JTAG
50M R9
R10
J1
CLK1
CLK2
CLK3
GND

R20
D2
FC
U3
SPI-FLASH

60 61
58 59
57 70
43 74
74
GND GND
80 76
47 48
39 40
GND GND
89 37
84 87
75 77
GND GND
69 72
34 35
31 33
GND GND
95 94
101 96
102 97

D8
D7
D6
D5
D4
D3
152
160
160
147
GND
145
143
104
GND
141
138
135
GND
128
118
116
GND
114
112
106
30
160
151
149
146
144
142
GND
139
137
134
GND
133
122
117
GND
115
113
110
105

A
J1



Kernel Board

ALTERA Cyclone II Development Board

FPGA :EP2C8Q208C8N

SDRAM : 256M BIT /or 32M byte

CFI_FLASH : 64M BIT / or 8M byte

SRAM :256K X 16 /or 4M BIT

EPCS :EPCS16/ or M25P16 (Configure FPGA)

CLK_INPUT:50MHZ,and one user clk input

Shipping list:

FPGA Board

USB Blaster

USB DC 5V

4 X The pillars

